

immerse yourself...

**No matter who you are,
or where you are
on life's journey,
You are welcome here.
God is still speaking,**



A Church...

Inclusive of all God's People

Attentive to God's Word

Supportive of One another

Responsive to Christ's Call

INSIDE THIS ISSUE:

In Focus Pastor Bob	P 1
Sunday Worship	Pp 2 & 3
Birthdays Anniversaries/ Calendar	See Insert
Zayna's Corner	P 4
Sunday Events	P 5
Mission	Pp 6,7 & 8
Weekday Events	Pp 8-10
This & That	Pp 11
Leadership Reports	Pp 12 - 14

IN FOCUS

PASTOR BOB

ON THE WAY - TOGETHER ON THE WAY - HOME ON THE WAY WITH JESUS

As a community of faith, we have been on a meandering journey since last September deeper and deeper into the basic stories of the Bible that shape our faith. We spent a good bit of time throughout the fall becoming more familiar with the basic Hebrew story of the Exodus. With the coming of Advent and into Christmas we made the turn toward home – the home we have in God and the home we were preparing for the coming of the Christ Child. With the coming of the New Year we will be moving into the New Testament and exploring the stories of and about Jesus, this child who became a man of monumental significance. These are the central stories of our faith as Christians.

We have the good fortune this year that the lectionary readings beginning with Advent and carrying us through Epiphany and beyond come from the Gospel of Mark. Mark is believed to be the first and basic account of the life and ministry of Jesus. Matthew and Luke appear to have borrowed large sections of Mark and John was written considerably later and to an entirely different audience which explains why John is so different from the other three Gospels. In Lent we will be dipping into John's account of the life and ministry of Jesus as well.

So for the next several months we will be "On the Way with Jesus" as we learn many of the basic stories about his life and its significance for us as Christians. The early Christians did not call themselves Christians, but People of the Way, the way of Jesus. The way of Jesus was not so much considered a geographic journey as we follow Jesus from Galilee to Jerusalem, as it is a way of life, a way that can last a lifetime and beyond. More important even than learning the stories of Jesus is the shape they give to our lives. So we'll be considering who Jesus is and what that means for us today. It will no doubt be a stimulating and challenging journey. We will continue gathering as an intergenerational community for worship at 9:30, followed by a learning experience for all ages after worship. The Faith Formation Ministry Team has made some modifications to our Sunday morning format (see article on next page) based on experience and feedback from the fall. We think this will provide meaningful improvements to our learning community. We hope to see you somewhere along the way as we follow Jesus further along the way into the new life he offers each of us.

FAITH FORMATION

ON THE WAY WITH JESUS



Having explored the basic story of the Exodus which would have shaped Jesus' understanding of faith, beginning in January we will be exploring the life of faith that Jesus showed us by the way he lived and what he taught. Worship with Faith Formation will begin on January 15 as we explore the meaning of Jesus' baptism. (On January 8, Worship and Faith Formation will be combined followed by Redeemer Youth's Annual Waffle Breakfast for people of all ages.)

Look for some tweaks to Worship and Faith Formation this new year. We will continue to gather for Worship at 9:30 as an intergenerational community. One of the things we learned from the fall was that worship itself is a learning environment. Many of our regularly-attending children have learned the Lord's Prayer (in real time) and now pray it like pros with the rest of us. Through worship our children, along with the rest of us, are learning the basic stories that shape our faith. Our children are learning the great songs of our faith and they are learning that we are a community "supportive of one another" through Joys and Concerns shared and "responsive to Christ's call" as we share with others through our "Thanks-living" and Offering.

Beginning January 15, children will be leaving worship during the last hymn for a follow-up learning experience in age-grouped class rooms. Pre-school – Kindergarteners will meet in the room just beyond the kitchen. Tammy Stratmeyer is the Team Leader and will be assisted by others. 1st – 3rd Graders will meet in the room next to the kitchen behind the fireplace with Rebecca Schultz as Team Leader. 4th – 7th Graders will meet in the room to the left behind the fireplace with Ryan Kuhlman as Team Leader. We hope other adults will continue to join us during the learning experience. The learning experiences are designed to end by 11:00.



Children and Worship

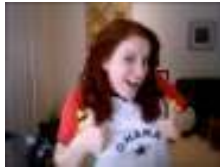
At Redeemer, children are an important part of the worshipping community. A special time for them during the service is provided. Adults are encouraged to accompany children who may be cautious.

A well-staffed Nursery is available from 9:30 AM until 12:00 noon for children under 3 years old. See an Usher or stop at the Welcome Table for directions to the Nursery.

**SUNDAY
WORSHIP**

<p>January 1 First Sunday after Christmas/ New Year's Day Isa 61:10-62:3 Ps 148 Gal 4:4-7 Luke 2:22-40 <i>Called to Gift</i></p>	<p>9:30AM Sunday Worship with Communion 10:30AM Blood Pressures taken after Worship</p>	<p>Gold Can: Friedens</p>
<p>January 8 The Baptism of Christ Gen 1:1-5 Ps 29 Acts 19:1-7 Mark 1:4-11 <i>New Beginnings</i></p>	<p>9:30AM Sunday Worship and Faith Formation —New Members 10:30AM Waffle Breakfast</p>	<p>Gold Can: Friedens</p>
<p>January 15 2nd Sunday after Epiphany 1 Sam 3:1-10 (11-20) Ps 139:1-6, 13-18 1 Cor 6:12-20 John 1:43-51 <i>Called and Recalled</i></p>	<p>8:30AM-9:15AM Laughter Club 9:30AM Sunday Worship and Faith Formation 10:30AM Blood Pressures taken after Worship 11:00AM - 12:00PM Choir Practice 11:00AM Faith Discovery 12:00PM Newsletter Articles for February Newsletter Are Due 1:00PM—3:00PM Sheltered Reality</p>	<p>Gold Can: Interfaith</p>
<p>January 22 3rd Sunday after Epiphany Jonah 3:1-5, 10 Ps 62:5-12 1 Cor 7:29-31 Mark 1:14-20 <i>Moving Forward</i></p>	<p>9:30AM Sunday Worship and Faith Formation 10:30AM Panera Bread Available for Free Will Offering 11:00AM Wellness talk with Dr. John Whitcomb <i>"The Trouble with Wheat"</i> 11:00AM - 12:00PM Choir Practice 1:00PM - 3:00PM Sheltered Reality Practice</p>	<p>Gold Can: Community Banquet</p>
<p>January 29 4th Sunday after Epiphany Deut 18:15-20 Ps 111 1 Cor 8:1-13 Mark 1:21-28 <i>With Authority</i></p>	<p>9:30AM Sunday Worship and Faith Formation —Zayna Preaching 11:00AM - 12:00PM Choir Practice</p>	<p>Gold Can: OCWM</p>

ZAYNA'S CORNER



Over the last few months I have been speaking with a number of Redeemer members about what it was like to go through the healing process after the fire. In conjunction with a course entitled "The Church as a Healing Community" I wrote a paper exploring the personal and communal loss and resurrection that took place in this community and has continued to take place since.

Going in, it was my idea that this church has been defined by the fire. I could see it everywhere: in your ability to adapt, your openness, the building, the beautiful prairie. However, as I completed my interviews and after spending hours sifting through old documents I have come to a new conclusion. *Redeemer, at its very essence is constantly being re-defined*: from two country churches making the bold decision to continue their journey together; to a healthy growing church leadership transitioning into "ministry teams" to better serve the congregation; even taking on a seminary intern and welcoming her new voice to the table.

Hans Kung, an outcast priest, once wrote:

*"If the Church really sees itself as the people of God, it is obvious that it can never be a static phenomenon, existing undisturbed by space and time. The church is always and everywhere a living people, gathered together from the peoples of this world and journeying through the midst of time. The Church is essentially en route, on a journey, a pilgrimage... **A Church which pitches its tents without looking out constantly for new horizons, which does not continually strike camp, is being untrue to its calling.**"*

So, as we move into the New Year I challenge Redeemer to ask:

Have we pitched our tents? Are we growing complacent? Or, are we continually looking to the horizons, asking God, "What next will define us?"

Redeemer Reminders

Each week on Thursday, Redeemer is sending an email with highlights and reminders for worship and upcoming events/activities. If you are not receiving this email and would like to be added to the list, please send an email to Carol Buehler at cbuehler@redeemerucc.org with "Add Me to the Redeemer Reminders" in the subject line.



The deadline for the February 2012 newsletter is January 15, 2012. Please email your

articles to Carol Buehler at cbuehler@redeemerucc.org or turn them into the office in her mailbox.

Wellness Talk with Dr. John Whitcomb

You are invited to a Wellness Lecture Series on Weight Loss:
Weapons of Mass Reduction

"The Trouble with Wheat".

January 22, 2012 at 11 AM



The Speaker is Dr John E Whitcomb, Board Certified in Internal Medicine, Integrative and Holistic Medicine, Antiaging and Regenerative Medicine. YOU are Welcome! This is a free session and is open to all! No registration is required.

Location: Redeemer United Church of Christ
W220 N4915 Town Line Road
Menomonee Falls, WI

For More Information, please call 262.784.5300 or go to
www.newsinnutrition.com

SUNDAY
EVENTS

Help Wanted!

Who? Someone willing to be part of the Blood Pressure Team.

Why? Blood Pressures are offered to be taken the 1st and 3rd Sundays of the month.

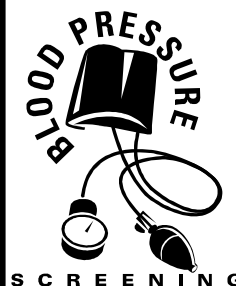
How? We have an electronic machine to read the pressures.

Where? Pressures can be taken in the church office or any quiet corner of your choice.

When? After service four times during the year.

If you would like to be part of this team, please contact Marty Davis at 262-695-8636 or email at martydavis456@gmail.com or Beth Enneking at benneking@wi.rr.com

Many thanks!



Redeemer's Financial Picture (Thru November 30, 2011)

Income:	\$299,072.23
Expenses:	\$311,717.74
Net Income:	-\$12,645.51

FINANCIAL
REPORT

MISSION



- Food Pantries Collection Schedule ~

Since we did the big food drive back in late October and early November to help feed the hungry here in Pewaukee and Sussex, the Mission Committee has decided to start collecting for both of the food pantries on a regular schedule. So every other month we will be rotating between Pewaukee and the Sussex Food Pantries to continue to help feed the hungry in these two areas.

We will start collecting in January and will collect food for the entire month for the scheduled food pantry to help keep their shelves filled during this time.

A shopping list will be included for the items most needed for each month.

~ Donation Schedule for the Food Pantries ~

Pewaukee Food Pantry

January, March, May, July, September, November

Sussex Food Pantry

February, April, June, August, October, December

For the month of January we will be collecting for Pewaukee Food Pantry.

The Food Pantry Shopping List

Cereal (Hot or Cold) ~ Pasta ~ Canned Fruits ~ Boxed Potatoes ~ Rice ~ Boxed Meals (Like Hamburger Helper) ~ Spaghetti Sauce ~ Canned Meats
Diapers Any Size (No Newborns) ~ Cleaning Supplies (Needs Dish Soaps)
Personal Hygiene Items (Needs Liquid Hand Soaps)

The Pewaukee Food Pantry was started in 1983 by a group of Christians seeing a need in the area. Harvey Buth & George Streiter were among the founders and continue to be vital members of the Interchurch Lay Council which runs the pantry.

Families are allowed to come for food two times per month and the pantry is open on Wed. & Sat. between 10:00am. & 11:00am.

The pantry is located at:

Gethsemane United Methodist Church at 642 Main Street, Pewaukee
(*In the Lower Level just north of WCTC)

Hope Center

MISSION

YOUR HELP CAN MAKE A DIFFERENCE

We respect the dignity of the people we serve and ask that any items you donate be in very good, usable condition. Clothing should not have rips, tears or stains. Please visit our website for more information. Thank you.

PEOPLE REQUEST

Clothing: Gently used **Casual** Clothing for men, women and children including New & Used Underwear, Socks, & Bras * Gently used **Career** Clothing for men and women * **Maternity** Clothes * **XXL- up Size** Women & Men's Clothing * Shoes * Sneakers * Boots * Larger size shoes, sneakers, & boots

Children's pajamas * Children's hangers * Skirt hangers * Jewelry

Layette Items for Expectant Mothers: Size #1 diapers * Newborn Clothes * Crib sheets * Hooded bath towels * Burp cloths * Onesies * Baby blankets * Baby wipes * Diaper bags * Baby bottles * Baby wash * Baby shampoo * Baby lotion

Houseware Items: Baking dishes * Bath linens * Dishes, Glasses, Cups and Flatware * Kitchen linens Pots and Pans * Blankets * Fitted & Flat sheets * Pillows * Pillow cases * Small alarm clocks

Children's Books: Ages 0 – 14 (Board books, picture books, Goosebumps, etc.)

Items People Do Not Request: Old Style clothing * Clothing labeled with someone's name or logo *Knick Knacks * Pictures * Games * Adult Books

HOPE CENTER

Office Supplies: Clip boards * Manila folders * Sharpie markers * **HP** Ink cartridges - 45, 74, 75, 93, 98, 12A, 35A, CB540, CB541, CB542, CB543 **Lexmark** Ink cartridges - 13, 32, 33, & 35 *Highlighters * Post-It notes * White-Out * Copy paper Cardstock * Pens * Scotch tape * Staples * 6 X 9 envelopes * 9 X 13 envelopes * #10 envelopes * Mailing labels 1 X 2 5/8 & 2 X 4 * Binders * 2 pocket folders

Kitchen & Bathroom Items: 45-gallon garbage bags * Pine-Sol * Lysol * Electric can openers* Liquid dish soap * Hand sanitizer * Paper towels

Maintenance Supplies: Salt for snow * Water softener salt pellets * Bathroom cleaners * Masking tape .94 in. x 60 yards

MEAL PROGRAM & DAY CENTER

Kitchen Supplies: Large pots * Large fry pans * Pot holders * Knives for cutting * Silverware for 150 guests (soup spoons, forks, & butter knives) * Rolling storage containers * Canisters * Food processor Spatulas * Pancake turners * Electric can openers *Kitchen towels * Laundry soap

Food Items: Canned fruit or veggies, fresh fruit, fresh produce, meat, eggs, bacon, lunch meat, cheese, cereal, oatmeal, peanut butter & jelly, French fries, fish, hamburgers, brats, hotdogs, hash browns, etc.

PROJECT MOVE

Furniture: Appliances (refrigerators, washers, dryers, freezers, etc.) * Baby furniture (car seat, stroller, swing, high chair, crib, etc.) * Coffee tables * Dining Room Table/Chairs * Dressers * End tables * Fans (except ceiling fans) * Mattresses/box springs or beds (King, Queen, Full, Twin) * Kitchen table and chairs * Lamps * Living room chairs * Loveseats & small couches * Recliners * Small appliances * TV's up to 27 inches * TV stands (no entertainment centers) * Window Air Conditioners (110 volt)

Hope Center
502 N. East Avenue
Waukesha, WI 53186
262-549-8726

MISSION

**COMMUNITY BANQUET**

WHEN: Thursday, Jan 12, 5:30 PM
Thursday, Jan 26, 5:30PM

WHAT: A free hot meal and chance to socialize with others from the Community

WHERE: St. James Church
W220 N6588 Town Line Road

A ministry of the Cooperating Churches of Sussex and Sussex-area Outreach Service serving singles, couples and families a hot meal on the 2nd and 4th Thursday of the month. The meal is absolutely free. Twice a year guests are invited to make a donation.

Mark your calendar for opportunities to help:

January 12, Clean-Up 5:45PM
February 23, Set-Up 4:30PM
April 12, Cook 4:00PM
May 24, Clean-Up 5:45PM
July 12, Set-Up 4:30PM
August 23, Cook 4:00PM
October 11, Clean-Up 5:45PM
December 13, Set-Up 4:30PM

Snow Angels Needed for Two Butler Seniors

Two seniors and adults with disabilities who live on W. Hampton Avenue and N. 126th Street in Butler need volunteers to help with snow removal this winter. Interfaith Senior Programs will match you with neighbors who won't be safe this winter without caring volunteers to remove snow from driveways and walkways. Volunteer as a family, congregation, business or individual. Contact Marcia Rupp at Interfaith at: (262) 549-3348, extension 2409 or MarciaR@interfaithwaukesha.org

WEEKDAY
EVENTS**Dartball**
Tuesday Evenings at 7:00 PM

January 3 — Redeemer UCC at St. Mark's
January 10 — Beautiful Savior at Redeemer UCC
January 17—Redeemer UCC at St. Luke's
January 24—Salem at Redeemer UCC
January 31—Redeemer UCC at E & R UCC

Contact Mike Strieter 414-427-2638 if you would like to learn more about dartball.

Introduction to Community Gardens

The Waukesha Country Green Team's Permaculture and Gardening Group is offering a free program on *Building Community through Community Gardens*. It is an introduction to community gardens for organizations, churches and individuals interested in creating and sustaining a community garden. It is also for groups just beginning, or experiencing challenges with a community garden. You will learn about planning your community garden, setting your purpose and design, soils and crops, planting and harvesting, operations, maintenance, and sustaining your community garden.

The program will be on Thursday, January 19th from 6:30-8:00 PM at UW-Waukesha in Room A100.

Space is limited, please email your reservation with name(s), organization or church you represent if any, and phone number by January 17th to Dave Wolken at dwolken@wi.rr.com. Call 262-719-7848 for more information.



Chili Supper—Get your Tickets Today

There is a chili supper on Saturday, January 21st from 3:00PM – 7:00PM at Evangelical & Reformed United Church of Christ.

Adults—\$7.00, Kids 12 & Under—\$5.00, Kids Under 1—Free

Menu includes: Chili and all the fixin's with cornbread, or Hot Dog-or-Grilled Cheese with Chips and a Pickle, Plus a Beverage & Dessert!

413 Wisconsin Ave, Waukesha *262-547-2424. www.uccwasukesha.org



Regeneration will meet on January 24, 2012. Please join us for a presentation by Corky Curtis on his amazing trip to Uganda. It will be an eye opener or ear opener for us all.

Join us for a continental breakfast at 9:00AM and the program at 10:00AM.



Winter Weather - Church Closings

With winter weather approaching you will want to be aware of events or worship services held at Redeemer UCC being cancelled. Please watch the major weather channels 4, 6 & 12 for closing notifications.

WEEKDAY EVENTS

January 19th
6:30—8:00pm

January 21st
3:00—7:00pm

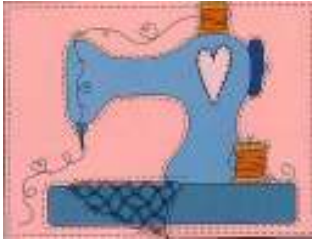
January 24th
9:00AM

WEEKDAY EVENTS

February 24th
6:30am-8:30pm

&

February 25th
9:30am- 4:00pm



Quilt Your Memories

Do you have items that you have saved, maybe for many years, because they are "special" to you? Maybe it is children's artwork, favorite photos, antique jewelry, old letters or poetry, a parent's favorite mementos, items collected on a special vacation, memorabilia from your favorite team----the list could go on and on. Are you looking for a unique way to preserve them and give them new life? If so, you may be interested in attending a workshop I'm calling "Quilt Your Memories".

You will learn a technique that combines images and fabric to help you create a fabric print. It is then possible to use these prints to make wall hangings, pillows, tote bags, quilts---the possibilities are endless.

If this sounds interesting to you and you'd like to learn more, I am inviting you to bring your sewing machine and come to the Quilt Your Memories workshop at Redeemer UCC. It will be held on Friday evening, February 24th from 6:30-8:30pm and continue on Saturday, February 25th from 9:30am-4:00pm. Friday will be used to help create a design with the items you bring and Saturday will be used to begin your creation. Basic sewing skills are needed, but no quilting experience is necessary. There is no registration fee, but participants will be asked to make a donation to cover the cost of supplies used.

To register, please fill out the tear-off below and give to Nancy Vollbrecht. If you'd like more information, please call 414-881-5536 or e-mail nvollbrecht@wi.rr.com. Registration is limited, so don't wait.

I'm very excited about this and hope you will join in the fun!
Nancy Vollbrecht



Quilt Your Memories

Name: _____

Phone/email _____

Recycling Corner from Earth Care Ministry Team

Are you recycling? There is a lot that you can do. Due to your efforts, 166 pounds of newspapers, magazines, junk mail, cardboard, aluminum and steel cans, plastic bottles and glass containers were recycled in 2010 in Waukesha County for each county resident compared to 577 pounds of trash. About 39% of the waste generated by county residents is recycled or composted. Recyclables are then sold with funds returned to the communities that have participated in the county recycling program the previous year.

Each month we plan to offer you tips on places to recycle items that are not currently included in curbside pick-up. Please go to the Waukesha County website for more information on items recyclable curbside.

http://www.waukeshacounty.gov/uploadedFiles/Media/PDF/Parks_and_Land_Use/Recycling/Residential/2008%20Household%20Recycling%20Guide.pdf



Dish Cloths

Don't forget Women's Guild is still selling dish cloths. They are \$5.00 for 3 dish clothes. See them on the table in the Great Hall.

Thank You - Thank You - Thank You

On behalf of myself and my family, I want to thank all of our Redeemer family for your prayers, cards, calls, visits, and the wonderful meals delivered to our home. I can't begin to tell you what a blessing it was for all of us.

I'm pleased to say that all of our prayers certainly helped as Tiffany (our granddaughter) is recovering nicely, though she has a long way to complete recovery. My recovery is complete. Only follow-up visits to doctors are requested now. What music to our ears to hear "Donna, you are 100% cancer free"!

Thank you all again so very much,

Donna & Curt

Dawn & Jim

Tiffany & Dan

RECYCLE
CORNER

Recycling



THIS &
THAT

THANK
YOU!

Minutes approved at the last council meeting**Redeemer UCC
Council Meeting Minutes
November 21, 2011**

The following people were present: Jim Hobbick, Caryn Easterling, Dave Swan, Linda Kind, Lisa Morris, Meredith Crosby, Rick Vollbrecht, Zayna Thompson McCollum, and Bob Ullman

Absent: Jason Fritz, Kathy Schaber

The meeting was called to order by Jim Hobbick. Joys and concerns were shared followed by Pastor Bob leading us in scripture reflection and prayer.

Minutes of the previous meeting ~ Motion 11-10-10: Rick Vollbrecht/Meredith Crosby moved to approve the minutes of the October 17, 2011 meeting as published. Motion Carried.

Additions to the agenda ~ Purchase of office computer; prairie burn fund and schedule.

Consent Agenda ~ Motion 11-10-11: The resignation from the Sunday School Director/Faith Formation Coordinator: Jolie Fritz was reviewed Linda Kind/Rick Vollbrecht moved to accept the resignation. Motion Carried. Lisa Morris/Linda Kind moved the reports be accepted as published. Motion Carried.

Motion 11-10-12 Meredith Crosby/Rick Vollbrecht to accept the recommendation of Jolie Fritz to reimburse Mary Jane Huber in the amount of \$250.00 for developing the Sunday School curriculum.

Financial Report ~ Nancy Ludin reemphasized that financials will be needed when the mortgage refinancing process begins. Waukesha State Bank is interested in speaking with Council Members regarding refinancing. Rick Vollbrecht, Caryn Easterling and Nancy Ludin will meet with representatives of Waukesha State Bank in the next week to discuss mortgage rates and fees. Landmark Credit Union will be contacted regarding terms of refinancing and fee schedule in order to compare rates and terms for refinancing that will occur January, 2012.

Motion 11-10-13: Linda Kind/Rick Vollbrecht moved to accept UBS settlement for claim. Motion carried.

The list of outstanding checks was reviewed by Pastor Bob. Those organizations issued uncashed checks will be sent a letter with a new check requesting deposit of this replacement check and instructions to destroy/discard the outstanding check if found.

Motion 11-10-14: Rick Vollbrecht/Linda Kind moved to receive the Financial Reports as published. Motion Carried.

Pastor Bob gave an update on the Stewardship Campaign. There are 66 giving units pledged. The giving schedule distribution: 21 weekly giving, 28 monthly giving, 17 annual giving. The 66 giving units represents \$176,600.00.

Council Member Representative to Ministry Team Meeting: Meeting scheduled for second Tuesday of each month. December 13th Meredith Crosby; January 10th Caryn Easterling; February 14th Linda Kind.

Prairie Burn Rick Vollbrecht explained that the prairie burn is completed every two years. The amount allocated for the Prairie Burn is \$1643.00. **Motion 11-10-15:** Lisa Morris/Rick Vollbrecht approve 1643.00 for Prairie Burn. Motion carried.

Minutes approved at the last council meeting Continued:

COUNCIL MINUTES

A quote has been received for a new computer for the office. The quote is \$648.00 for a Dell Computer. A back up hard drive is also needed to insure archiving of church files. **Motion 11-10-16:** Meredith Crosby/Linda Kind moved to purchase the Dell Computer and back up hard drive with purchase price not to exceed \$750.00 for the two items. Motion carried.

Motion 11-10-17 Lisa Morris/Rick Vollbrecht moved to adjourn. Motion carried and the meeting was adjourned at 9:40 pm with the Lord's Prayer.

Respectfully Submitted,

Caryn Easterling, Vice Moderator
for Kathy Schaber, Secretary

2011 Church Council

Officers

Moderator	Jim Hobbick	(262) 695-9611	jim-dawn-hobbick@wi.rr.com
Vice Moderator	Caryn Easterling	(262) 691-4843	cseasterling@aol.com
Treasurer	Nancy Ludin	(262) 246-9908	nrludin@wi.rr.com
Council Secretary	Kathy Schaber	(262) 246-8565	kandgschaber@wi.rr.com
Senior Advisor	Dave Swan	(262) 691-0471	dbswan@wi.rr.com

Pastor

Bob Ullman	(262) 246-6710	rullman@redeemerucc.org
------------	----------------	-------------------------

Church Council

Rick Vollbrecht	(262) 691-7655	rvollb@wi.rr.com
Lisa Morris	(262) 549-5937	lisajamesm@yahoo.com
Jason Fritz	(262) 442-3275	jason.fritz@ally.com
Linda Kind	(262) 251-8094	lkindcpa@aol.com
Meredith Crosby	(262) 786-8535	rcrosby2@wi.rr.com

PASTOR'S REPORT

PASTOR'S REPORT – December 17, 2011

Pastoral care during this period:

Hospital/nursing home visits	4
Home visits	5
Counseling	8
Pastoral contacts	99
Committee meetings	10
Administrative meetings	27
Worship	5
Classes taught	1

Additional events:

Service to the Community
Sussex-Area Community Thanksgiving Worship
at St. Alban's Episcopal Church
Hamilton District Strategic Plan Review
Cooperating Churches of Sussex Board of Directors

Continuing Education
Empathy and Metaphor in Ministry and Supervision
Garrett Evangelical Theological Seminary 11/17
Family Process and Natural Systems 12/5-7

Request for Removal from Membership
Donna Kirschling

Vacation days

Available	36
Used this period	0
Used to date	20

Continuing Education days

Available	14
Used this period	4
Used to date	6



PLEASE NOTE: HIPAA (The U.S. Health Insurance Portability and Accountability Act) provides for patient privacy in hospitals and nursing homes. What that means for Pastoral Care is that no one will be given information about patients without their consent. It also means that even if patients are asked about church affiliation during the admission process, no one from the health care institution will be contacting the church.

If you or a loved one would like or expect a pastoral visit, you or someone designated by you must call the church and let us know. Otherwise we have no way of knowing about your situation. We are more than willing to provide pastoral care, but need your help in keeping us aware of your needs.

Ministry Team Summaries

MINISTRY TEAMS

The **Stewardship Team** works to educate the congregation about the spiritual basis for our giving. This process will generate testimony to the benefits of returning God's gifts of time, talent and treasure to perform God's work in our church and throughout our community. We help develop a greater level of giving by our congregation in order to support the overall ministry and missions at Redeemer.

The **Church Growth Team's** goal is to make Redeemer a welcoming church. Additionally, we strive to make the community aware of whom we are through projects such as: Getting to Know Redeemer Sessions, Coordinating the Redeemer Fun Follies, Church Picnic, Advertising and Signage, Redeemer Brochures and Promotional Items and Hosting the Information Booth at Oktoberfest. We further show our spirit by greeting visitors and welcoming new members.

Faith Formation's primary goal is to enable people of all ages to deepen their faith and nurture their relationship with God. Another goal is to celebrate with and support one another in each person's faith journey. Redeemer's Faith Formation Ministry Team is committed to providing opportunities and programs not only within the Sunday School, but also for our youth, young adults, families, parents and other adult educational experiences. Together our faith will grow and so our relationship with God and one another.

As the **Mission Team** we endeavor to be responsible stewards of God's gifts - linking the needs of the world with the time, talent and financial resources of our congregation. Ongoing activities include Our Church's Wider Mission (OCWM), Gold Can offerings, Outreach Meals, Operation Backpack school supply drive, Interfaith Holiday Gift Baskets, Inter-Faith Caregiving Network, Habitat for Humanity, Alternative Christmas, Hope House of Milwaukee, Sussex-Area Outreach Services, Pewaukee Food Pantry and Back Bay Mission trip to help rebuild the Gulf Coast following Hurricane Katrina.

Congregational Care Ministry is made up of many mini teams. We have a CARE (Contact, Assist, Relate and Encourage) team, In-Home Visiting Team and a twice monthly Blood Pressure Team in church. Our Helping Hands Ministry assists members and friends who need a helping hand. We also offer a support group for those living with chronic illnesses. Most recently we have started a Prayer Shawl ministry.

The **Worship Ministry's** work in many ways is the "doorway" into the whole life of Redeemer, in worship we meet God and one another where all are welcomed into the community of faith. Worship inspires, empowers and guides our personal and community life. Planning for and conducting meaningful worship experiences is our principle ministry. In addition to regularly planning and conducting worship services throughout the year, our goals include finding more ways to use our new worship space to create meaningful worship experiences; making use of the artistic gifts of more people including music, drama, dance and visual arts to enhance our worship; developing different types of worship to address particular needs of different groups of people (e.g. healing services or services focused on needs of youth and young adults) outside of regular Sunday worship.

The **Facilities Team** will handle tasks to do with the physical upkeep of our church home including the building, grounds and the church cemetery. These tasks include cleaning, maintenance, security, upkeep and repairs, snow removal, and lawn mowing.

The **Youth Ministries Team** works to build strong relationships between youth and adults to support their spiritual and social development. This team plans to provide support for retreats, trips, fellowship activities and leadership training.

Redeemer UCC
P.O. Box 230
Sussex, WI 53089

Return Service Requested

—SUNDAY SCHEDULE—

9:30 AM Worship

Nursery Care Provided 9:30-12:00 AM

Faith Formation (Sept.-May)

Open to all ages

9:30-11:00 AM

—CHURCH OFFICE—

Hours: Monday - Thurs 10AM to 1PM
Sundays 8:30AM - 12:00PM

(262) 246-6710 Fax (262) 246-6845
W220 N4915 Town Line Rd
Menomonee Falls, WI 53051
www.redeemerucc.org

Rev. Bob Ullman, Pastor
Zayna Thompson McCollum, Seminary Intern
Jim Hobbick, Church Moderator
Carol Buehler, Parish Administrator
Beth Enneking, Secretary

Visitors are cordially invited to join us!

REDEEMER



UNITED CHURCH OF CHRIST

JANUARY 2012 NEWSLETTER

Refrigerator Reminder—Pull Out and Save!

JANUARY BIRTHDAYS

Dave Canada	JAN 2	Quinn Fritz	JAN 18
Matthew Swan	JAN 2	Vi Alberswerth	JAN 19
Lynn Wanner	JAN 2	Ken Rockey	JAN 21
Brian Everts	JAN 3	Mary Weiland	JAN 21
Jonathan Olson	JAN 3	Rebecca Stuempfig	JAN 22
Michael Krupelak	JAN 4	Meredith Crosby	JAN 24
Brandon Swan	JAN 5	Donna Kehle	JAN 25
Alison Ho	JAN 8	Jim Winchell	JAN 26
Mary Jane Huber	JAN 8	Carolyn Jaeschke	JAN 27
Marty Davis	JAN 11	Scott Schepp	JAN 28
Ed Hagopian	JAN 16	Nancy Kunde	JAN 31



JANUARY ANNIVERSARIES

Cotey and Amanda Jordan	JAN 17	
Don and Audrey Macomber	JAN 26	55 yrs!
Kurt and Sarah Hemmingsen	JAN 28	



JANUARY PRAYER FAMILY OF THE WEEK

The purpose of the prayer family is to share our concern and support at times other than crisis times. Ways to do that are to include the person or family in your prayers during the week by sending a note, talking to them at church, a telephone call or email. The names are chosen at random, but sometimes seem by design in that it has come at a particularly appropriate time for them. It is our hope that this will continue to be meaningful.

January 1

Max & Nicole Faulstich (262) 820-2398
 Tyler, Cean, Emma
 W231 N7881 Martin Ct.
 Sussex, WI 53089 nicmax@sbcglobal.net

January 8

Jason & Jolie Fritz (262) 893-5391
 Skylar, Quinn
 N70 W25842 Coventry Ct.
 Sussex, WI 53089 chefjoliefritz@yahoo.com

January 15

David & Caren Fournier (262) 538-0864
 Matthew
 W256 N5970 Windy Pass Drive
 Sussex, Wi 53089 caren.fournier@phci.org

January 22

Kristi Krupelak (414) 628-4244
 N113 W16967 Murillo Drive Apt 2
 Germantown, WI 53022

January 29

Fred & Marlene Schildt (262) 695-1574
 N48 W22288 Weyer Road
 Pewaukee, WI 53072

JANUARY 2012

Sunday	Monday	Tuesday	Wednesday	Thursday	Friday	Saturday
1 9:30 AM Sunday Worship w/Communion 10:30 AM Blood Pressures	2 2:00 PM Staff Meeting	3 1:00 PM Congregational Care Meeting 6:00 PM - 8:00 PM Worship Space in Use 7:00 PM Bible Study 7:00 PM Dartball Away 7:00 PM Faith Formation	4 11:00 AM - 12:30 PM The Threshold Singers - Practice	5	6	7
8 9:30 AM Sunday Worship and Faith Formation - New Members 10:30 AM Waffle Breakfast	9 1:00 PM Staff Meeting	10 6:00 PM - 8:00 PM Worship Space in Use 7:00 PM Bible Study 7:00 PM Dartball 7:00 PM Ministry Directors Meeting	11 9:30 AM Mom's Club	12 8:30 AM His & Hers Breakfast - Maxim's 5:30 PM - 6:00 PM Community Banquet - St. James Catholic Church	13	14 6:00 PM - 12:00 AM Building Use - Private
15 8:30 AM - 9:15 AM Laughter Club 9:30 AM Sunday Worship and Faith Formation 10:30 AM Blood Pressures 11:00 AM - 12:00 PM Choir Practice 11:00 AM Faith Discovery 12:00 PM Newsletter Articles Deadline 1:00 PM - 3:00 PM Sheltered Reality	16 1:00 PM Staff Meeting 7:00 PM Council Meeting	17 6:00 PM - 8:00 PM Worship Space in Use 7:00 PM Bible Study 7:00 PM Dartball Away	18	19	20 6:00 PM Ana Pearson/ Shane Simpson Rehearsal	21 2:00 PM Ana Pearson/Shane Simpson Wedding
22 9:30 AM Sunday Worship and Faith Formation 10:30 AM Panera Bread 11:00 AM - 12:00 PM Choir Practice 11:00 AM Wellness Talk with Dr. John Whitcomb - "The Trouble with Wheat!" 1:00 PM - 3:00 PM Sheltered Reality	23 1:00 PM Staff Meeting	24 9:00 AM Breakfast 10:00 AM Regeneration Program 6:00 PM - 8:00 PM Worship Space in Use 7:00 PM Bible Study 7:00 PM Dartball Away	25	26 5:30 PM - 6:00 PM Community Banquet - St. James Catholic Church / 5:45 UCC responsible for clean-up	27 6:00 PM - 10:00 PM St. James RCIA retreat	28 8:00 AM - 4:30 PM St. James RCIA Retreat
29 9:30 AM Sunday Worship - Zayna Preaching 11:00 AM - 12:00 PM Choir Practice	30 1:00 PM Staff Meeting	31 6:00 PM - 8:00 PM Worship Space in Use 7:00 PM Bible Study 7:00 PM Dartball Away	1 11:00 AM - 12:30 PM The Threshold Singers - Practice	2	3	4 9:00 AM - 5:00 PM Bethel-Bethany UCC confirmation class retreat